

Proudly Serving a 200 Mile Radius from each of our Three Texas Locations

LUBBOCK

AMARILLO

HEREFORD



CONVEYOR COMPONENTS & SYSTEMS

BEARINGS & DRIVES

ELECTRIC MOTORS

PIPE FITTINGS & VALVES

[www.mbmckee.com](http://www.mbmckee.com)





Since our inception in 1943, M.B. McKee Company has been providing outstanding products, services and solutions for a diverse range of industries throughout our region. Our continued growth over the past three quarters of a century is built upon the hard work and commitment to excellence our founder—M.B. McKee Sr. instilled.

Today, McKee remains family-owned and operated. Under the leadership of M.B.'s grandson Mark, granddaughter Cindy and her husband Kirk, our leadership maintains the Vision forged by its founders—Great Service, Large Inventory and In-House Design.

From the beginning, McKee quickly gained a reputation for having what you want in-stock. We want to be your "SINGLE – SOURCE – SOLUTION" for products and services.



**LUBBOCK**  
806-747-4521

**AMARILLO**  
806-391-6005

**HEREFORD**  
806-364-6253



## GREAT SERVICE, LARGE INVENTORY & IN-HOUSE DESIGN



**Three Locations – Family Owned Flexibility**

**Over 200,000 SKUs**

**Expert Sales & Engineering Support**

**System Design Assistance**

**Serving West Texas, Eastern New Mexico,  
Western Oklahoma & Southwest Kansas**

**24/7 Emergency Support**

**Delivery Services**

[www.mbmckee.com](http://www.mbmckee.com)





## CONVEYOR COMPONENTS & SYSTEMS



M.B. McKee maintains a large inventory of conveyor components that your business needs to keep production running smoothly and on schedule. Because life happens 24/7—if you or your client's conveyor breaks down, we're available anytime to respond with the right replacement parts and components.

- Belt Conveyors**
- Bucket Conveyors**
- Drag Conveyors**
- Roller Conveyors**
- Screw Conveyors**
- Wire Belt Conveyors**
- And More**



- Unmounted Bearings***
- Cylindrical**
- Taper Roller Bearings**
- Needle Roller Bearings**
- Spherical Roller Bearings**
- Deep Groove Ball Bearings**
- Angular Contact Ball Bearings**
- Thrust Ball Bearings**
- And More**

Our inventory of industrial bearings is so large, it's impossible to list them all here, so if you don't see a bearing or other component you need listed, we most likely still have it on hand. McKee is your single source for all your bearing needs.

- Mounted Bearings***
- Ball Bearings**
- Taper Rollers**
- Spherical Roller Bearings**
- And More**



## BEARINGS



- Shaft Mount Speed Reducers**
- Screw Conveyor Drive**
- Worm Gear**
- Inline Helical**
- Right Angle Helical Bevel**
- Parallel Shaft**
- Planetary**

McKee stocks a large inventory of electric motors, components, gearing and power transmission products to ensure your operational success.

- Single Phase Series Motors**
- Three Phase Series Motors**
- Explosion-Proof Series Motors**
- Vertical Hollow Shaft Motors**
- DC Series Motors • Farm Duty Motors**
- Capacitor Start and Run Motors & More**



## ELECTRIC MOTORS

## GEARING





At McKee we have provided component parts for industrial, agricultural and commercial equipment since 1943. We're accustomed to helping customers in the agricultural, industrial and commercial sectors find parts and components to ensure your production runs smoothly with minimal interruptions and delays.

We carry a vast inventory of parts and components including bearings, belts, chain, conveyor components, conveyor systems, gearing, lifting products, motors, drives, PT components, product separation, tools and accessories, valves and fittings, and more. We supply parts to the agricultural sector in the cotton, grain, corn, and peanut markets. We also serve municipalities, construction, factories and other businesses throughout the region.

Our inventory separates ourselves from competitors while our in-house engineering services and ability to provide efficient system design that establishes McKee as a world-class supply chain partner.

# YOUR SINGLE-SOURCE FOR PARTS, COMPONENTS & MORE



**LUBBOCK**  
806-747-4521



**AMARILLO**  
806-391-6005



**HEREFORD**  
806-364-6253





M.B. McKee Company partners with the most respected and reliable manufacturers in the industry. Together, we work hard to ensure optimum efficiency and performance at a competitive price. This publication illustrates a sampling of the kind of quality companies we have strong relationships with. Contact your local representative today or visit us online at [www.mbmckee.com](http://www.mbmckee.com) for additional information.

**LUBBOCK**  
806-747-4521

2205 Avenue E  
Lubbock, TX 79404

**AMARILLO**  
806-391-6005

5805 Canyon Drive  
Amarillo, TX 79110

**HEREFORD**  
806-364-6253

345 E 1st Street  
Hereford, TX 79045

Conveying with Confidence...

**ALL-STATE BELTING**

*from field...*

*...to Silo.*

Expediting High Performance Grain Elevator  
& Agricultural Belting in Texas for 45 years!

**Duff-Norton**

Your **First Choice**  
for **POSITIONING & PROCESS SOLUTIONS**

Since 1883, Duff-Norton has been at the forefront of precision motion technology, providing a continued commitment to leading edge manufacturing and highest quality engineering products for the most advanced industrial lifting, positioning and transfer needs for our customers worldwide.



Motion technology today is expected to lift, move and precisely position heavy loads, often under extreme or adverse conditions. Whether it's creating motion to twist and pivot, open and close or keeping a production line moving, Duff-Norton has the right solution to meet the demand. Our systems can be found in industries ranging from aluminum, steel, agriculture, pharmaceutical, material handling, energy, food and beverage, and automated machinery.

**INTERESTED IN LEARNING MORE?**

Call us at 1-800-477-5002 or visit us online at [www.duffnorton.com](http://www.duffnorton.com) for product information, complimentary engineering advice, and free CAD Model downloads.

# Congratulations M. B. McKee



## We are Proud to be Your Supplier

**BANDO**

## PREMIUM QUALITY POWER TRANSMISSION BELTS

S I N C E 1 9 0 6





**CONVEYORS, INC.**



WEB: [www.conveyorsinc.net](http://www.conveyorsinc.net) PHONE: 817.473.4645 EMAIL: [sales@conveyorsinc.net](mailto:sales@conveyorsinc.net)



THE LEADER IN VALUE ADDED CONVEYING EQUIPMENT WITH  
WORLD CLASS EXPERIENCE!

### OUR PRODUCTS

- > Screw Conveyors
- > Screw Feeders
- > Vertical Screw Conveyors
- > Shaftless Screw Conveyors
- > Live Bottom Feeders
- > Bucket Elevators
- > Drag Conveyors
- > Flexwall Conveyors
- > Classifiers & Washers
- > Mixers & Blenders
- > Gates
- > CEMA Components
- > Made to Order Components
- > Chutes & Hoppers



**WHAT CAN WE BUILD FOR YOU TODAY?**

Web: [WWW.CONVEYORSINC.NET](http://WWW.CONVEYORSINC.NET) • Email: [SALES@CONVEYORSINC.NET](mailto:SALES@CONVEYORSINC.NET)

620 South 4th Ave, Mansfield, Texas 76063 • Phone: 817.473.4645 • Fax: 817.473.3024



**Martin**

**Total  
Package**

**Power Transmission**

**Material Handling**

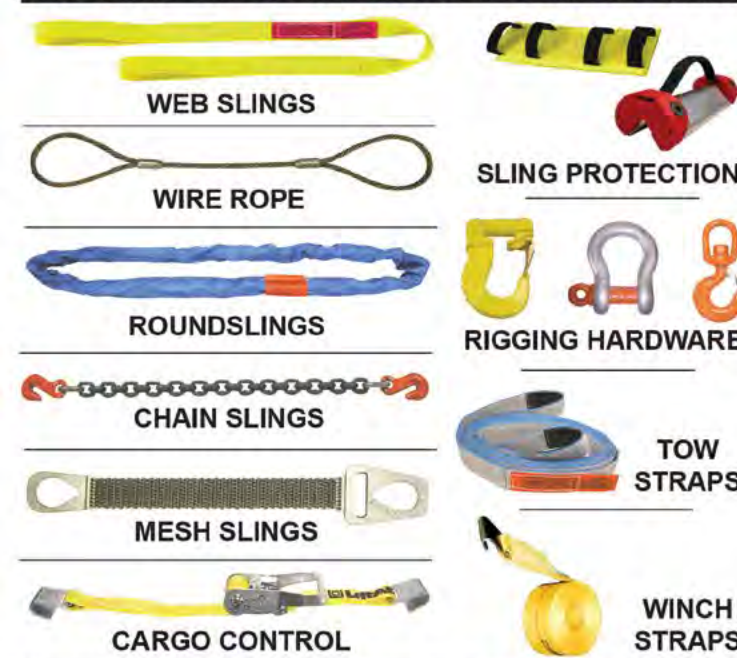
**Idlers**

**Martin ELITE SERIES**



**LiftAll**

THE SLINGS YOU NEED WITH THE SUPPORT YOU WANT



Manufacturing the highest quality standard SLINGS, custom slings, and cargo control from five locations across the USA. Web, Round, Wire Rope, Chain & Wire Mesh Slings.  
800-909-1964 [www.lift-all.com](http://www.lift-all.com)

**DEPENDABLE  
CUSTOM SOLUTIONS**



NORD Gear Corporation offers a full range of geared motors, electric motors and drive electronics in various sizes and versions. Plus, superior customer service and the industry's shortest lead times.

**24/7 ONLINE ORDERING**

CREATE YOUR CUSTOM CONFIGURATION TODAY  
[NORD.COM](http://NORD.COM)





# TOUGH CUSTOMERS. TUFF BUCKETS: MAXI-LIFT.

Proud to Partner with



Featuring Pathfinder Plus Belting by **Continental**



**Maxi-Lift Inc.**

800.527.0657 MAXILIFT.COM



Buckets + Belting + Splices + Bolts = **COMPLETE ELEVATOR REBUILD**

## SKF Pulse™ Machine monitoring made easy.



Predict machinery issues before operations are impacted. Simplified inspection, machine health data collection and analysis are now within everyone's reach.

With SKF Pulse, anyone can monitor machine health without the need for training or diagnostic expertise.

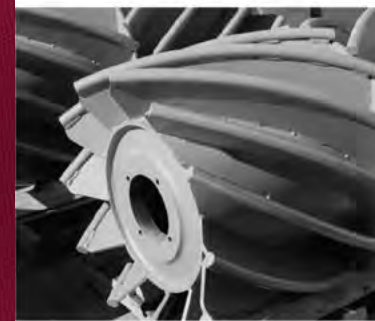
Combining an easy-to-use sensor with a free mobile app, you can quickly and easily identify machine condition and share machine health data within your organization.

Learn more at [skfusa.com/skfpulse](http://skfusa.com/skfpulse)



**SKF**

**PPI**  
PRECISION PULLEY & IDLER



PPI IS YOUR  
**#1 TRUSTED SOURCE**  
FOR HIGH PERFORMANCE  
**CONVEYOR PULLEYS,  
IDLER & ACCESSORIES**

**WE KEEP IT MOVING**

[www.ppi-global.com](http://www.ppi-global.com)

## Drive Solutions<sup>2</sup>

Premium Belt and Chain Drive Solutions from Timken

**CARLISLE**  
BELTS BY TIMKEN

**DRIVES**  
CHAIN BY TIMKEN

### Solutions<sup>2</sup>

Whether belt drive or chain drive, Timken delivers solutions for both with premium Drives® chain or Carlisle® belts.

### Support<sup>2</sup>

Our best-in-class customer service and engineering teams have the experience and expertise to assist you in finding the most efficient drive solution for your application.

### Quality<sup>2</sup>

Benchmark Timken quality is the hallmark of these key drive components. Look to this powerfully dynamic duo for the reliable and lasting quality you expect from a mechanical power transmission product by Timken.

[www.timken.com](http://www.timken.com)

**TIMKEN**



# ONE SOURCE

**PROBLEM SOLVING &  
MAXIMUM PROTECTION**

## ROLLER CHAINS

lube free  
harsh environment  
anti-corrosive  
food packaging

## ENGINEERING CHAINS

elevator chains and buckets  
sealed joint chains  
grain and biofuel drag chains  
dryer/dehydrator chains  
mining chains

## SPROCKETS

SMART TOOTH™  
carbon steel  
stainless steel  
hardened & non-hardened teeth

## BACKSTOPS, CLUTCHES & OVERLOAD PROTECTION

improved wear life  
overload protection  
less downtime

## CABLE & HOSE CARRIERS

linear motion  
cranes  
oil & gas



ROLLER CHAINS • ENGINEERING CLASS CHAINS • BACKSTOPS • SPROCKETS • CABLE & HOSE CARRIERS • POWER TRANSMISSION PRODUCTS

**TSUBAKI**  
Total Package  
USTSUBAKI.COM



**LUBBOCK**  
806-747-4521

2205 Avenue E  
Lubbock, TX 79404

**AMARILLO**  
806-391-6005

5805 Canyon Drive  
Amarillo, TX 79110

**HEREFORD**  
806-364-6253

345 E 1st Street  
Hereford, TX 79045





---

# Dodge® bearings and power transmission

Local manufacturing  
Global support



For 140 years, we've focused on providing industry-leading products that reduce your total cost of ownership. Every day we produce the mounted bearings, enclosed gearing and PT components you trust and prefer from Rogersville, Tennessee; Marion, Asheville and Shelby, North Carolina; and Belton and Greenville, South Carolina.

We are proud to continue to offer the same products and service you prefer with the global ABB technologies and innovation you deserve.

479-646-4711  
baldor.com abb.com

